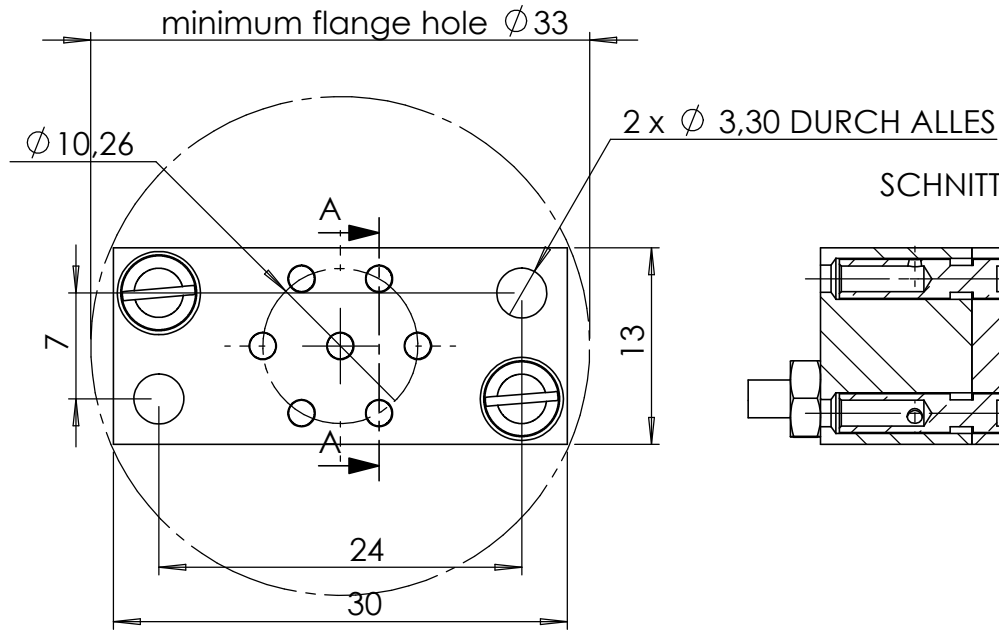
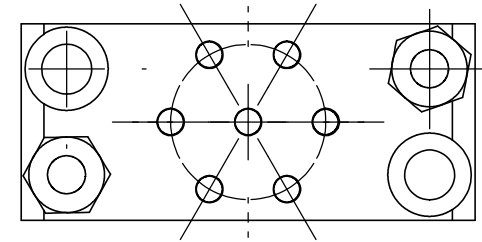
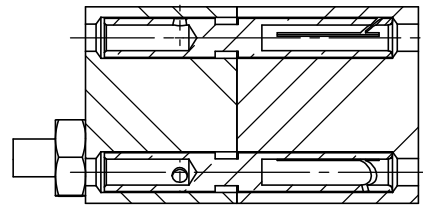


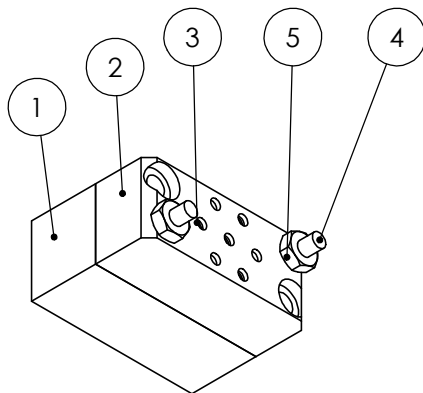
POS-NR.	DESCRIPTION	QTY	MATERIAL
1	Back Plate	1	PEEK
2	Back Plate	1	PEEK
3	Crimp Pin 1.3	4	Copper Alloy Gold plated
4	Screw M2.5X25	2	1.4301
5	Nut M2.5	2	1.4301



SCHNITT A-A



View 1 : 1



Bemerkungen (Remarks)				Freimaßtoleranz (Standard Toleranz)		Maßstab (Scale)		Funktionsmerkmale nach ISO/TS 16949 (functional featur after ISO/TS 16949)		Rauheit (Rougness)		europ.Projektion									
All informations provided in this drawing is considered to be confidential, proprietary and secret information. It is intended only for the use of individual or entity to whom it is sent. Individual or entity agrees to not disseminate or copy this information to anyone other than originally specified without the written consent Allecra GmbH.				2:1		Material, Standard Oberfläche (Treatment)		Kanten (edges) ± 0.1 ± 0.25				Gewicht (weight) g 18.85									
														Datum		Name		Bezeichnung (Title)		Page: Pages:	
														Design 29.08.2013		JB		Connector for High Voltage F/T 4 pin Varia		2 2	
Drawn 25.10.2013		JB		Revision																	
Check						Zeichnungsnummer (Drawing No.)		Revision													
01		SCREW M2X20 11.09.2013 JB				267-CON12K-4		01													
Index		Modification		Datum		Name		Datei (File) C:\PDMStore\C:\PDMStore\		Format A4											