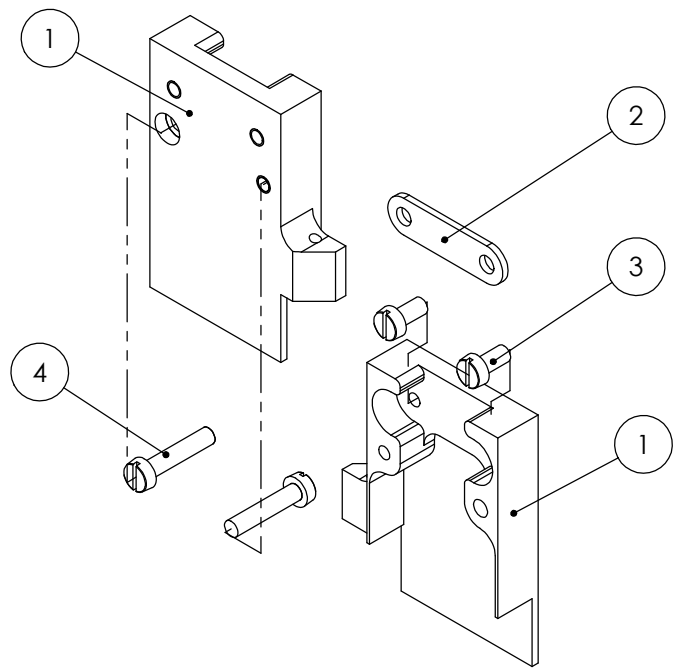
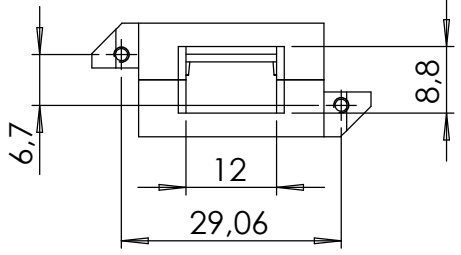
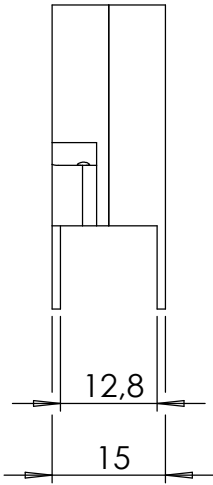
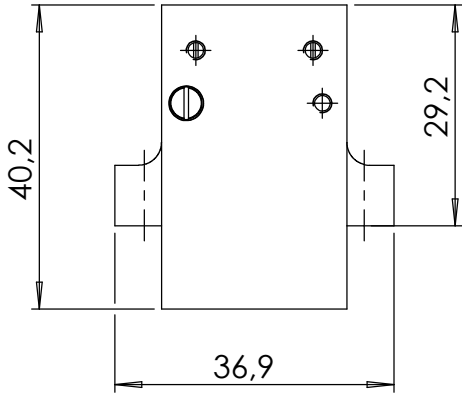


POS-NR.	DESCRIPTION	Material	QTY
1	housing-UHV 15 pin	3.1645 (EN AW-2007)	2
2	strain relief for UHV	1.4301 (304)	1
3	srew M2.5X5	Stainless Steel	2
4	screw M2.5x12	Stainless Steel	2



Bemerkungen (Remarks)				Freimaßtoleranz (Standard Toleranz)		Maßstab (Scale)	Rauheit (Rougness)	europ.Projektion	
All informations provided in this drawing is considered to be confidential, proprietary and secret information. If is intended only for the use of individual or entity to whom it is sent. Individual or entity agrees to not disseminate or copy this information to anyone other than originally specified without the written consent Allectra GmbH.				Datum		Name	Material, Standard Oberfläche (Treatment)		
				Drawn 24.07.2017		FW	Bezeichnung (Title)	Gewicht (weight) g	
				Check				housing for 15 pin PEEK + ceram. con standard SUB-D	16.68
							Zeichnungsnummer (Drawing No.)		Page: Pages:
								211-HSG-D15-UHV	2 8
							Datei (File)		Revision
								X:\PDMStore\FW\X:\PDMStore\FW	
Index	Modification	Datum	Name						Format A4

