

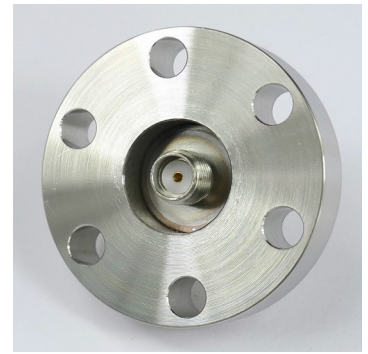
## 27GHz SMA feedthrough for UHV applications 242-SMAD27G-C16 (and other flange sizes)

In addition to the 18 GHz SMA, Allectra offers a double-sided SMA feedthrough with an extended frequency range up to 27GHz.

These also called "Super-SMA" versions are a cost effective alternative to the SMA-K or 2.92mm Versions, if frequencies above 27GHz are not required.

Housing is Stainless Steel with gold plated centre contact.

The smallest mounting flange is 16CF. Up to 4 of these feedthroughs can be fitted to a DN40CF flange.

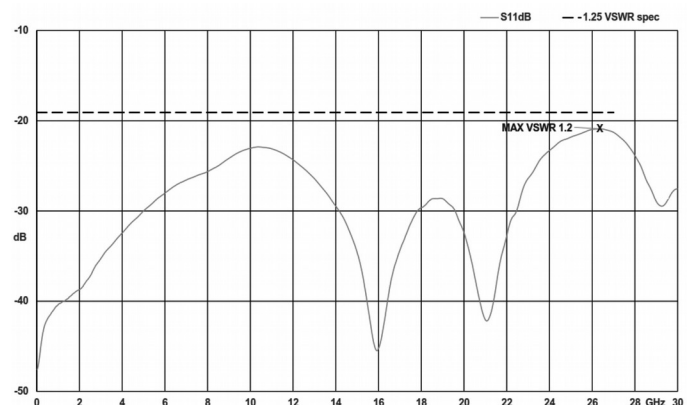


242-SMAD27G	
Type	Super-SMA with extended Frequency range
Impedance	50 Ohm
Frequency range	0 – 27 GHz
Standing Wave Ratio (VSWR)	typ 1.25 @ 27GHz (max. 1.4*)
Insertion Loss	typ. 0.15 x √ f (GHz) db
Max. voltage	1000V
Temperature	-55 ... 180°C (CF flanges)
Vacuum leak rate	< 5x 10 <sup>-10</sup> mbar l / s (He)
Materials	Stainless Steel, BeCu, FeNi, Glass, PTFE
Plating	Inner contact gold plated
Seal	Welded all metal seal

\*) Measurements on >10 off parts gave an average value of 1.23 with a standard deviation of 0.0612



Flange	Pins	Part Code
16CF	1	242-SMAD27G-C16
40CF	1	242-SMAD27G-C40
40CF	2	242-SMAD27G-C40-2
40CF	3	242-SMAD27G-C40-3
40CF	4	242-SMAD27G-C40-4
16KF	1	242-SMAD27G-K16



Typical damping curve of 242-SMAD27G