

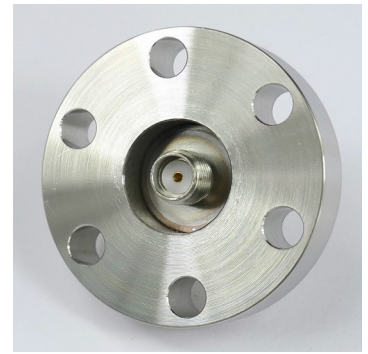
27GHz SMA feedthrough for UHV applications 242-SMAD27G-C16 (and other flange sizes)

In addition to the 18 GHz SMA, Allectra offers a double-sided SMA feedthrough with an extended frequency range up to 27GHz.

These also called "Super-SMA" versions are a cost effective alternative to the SMA-K or 2.92mm Versions, if frequencies above 27GHz are not required.

Housing is Stainless Steel with gold plated centre contact.

The smallest mounting flange is 16CF. Up to 4 of these feedthroughs can be fitted to a DN40CF flange.

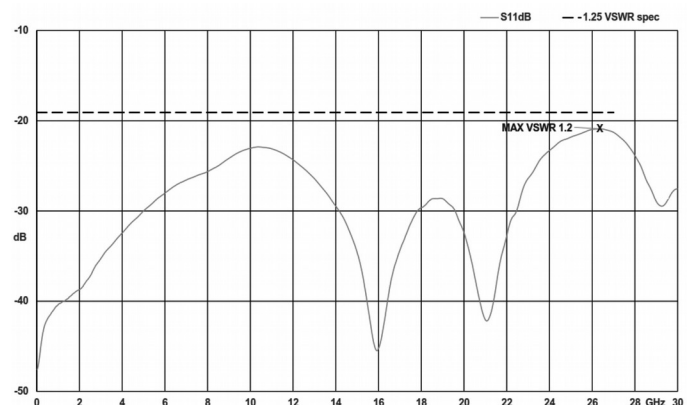


| 242-SMAD27G | |
|----------------------------|--|
| Type | Super-SMA with extended Frequency range |
| Impedance | 50 Ohm |
| Frequency range | 0 – 27 GHz |
| Standing Wave Ratio (VSWR) | typ 1.25 @ 27GHz (max. 1.4*) |
| Insertion Loss | typ. 0.15 x √ f (GHz) db |
| Max. voltage | 500V |
| Temperature | -55 ... 180°C (CF flanges) |
| Vacuum leak rate | < 5x 10 ⁻¹⁰ mbar l / s (He) |
| Materials | Stainless Steel, BeCu, FeNi, Glass, PTFE |
| Plating | Inner contact gold plated |
| Seal | Welded all metal seal |

*) Measurements on >10 off parts gave an average value of 1.23 with a standard deviation of 0.0612



| Flange | Pins | Part Code |
|--------|------|-------------------|
| 16CF | 1 | 242-SMAD27G-C16 |
| 40CF | 1 | 242-SMAD27G-C40 |
| 40CF | 2 | 242-SMAD27G-C40-2 |
| 40CF | 3 | 242-SMAD27G-C40-3 |
| 40CF | 4 | 242-SMAD27G-C40-4 |
| 16KF | 1 | 242-SMAD27G-K16 |



Typical damping curve of 242-SMAD27G