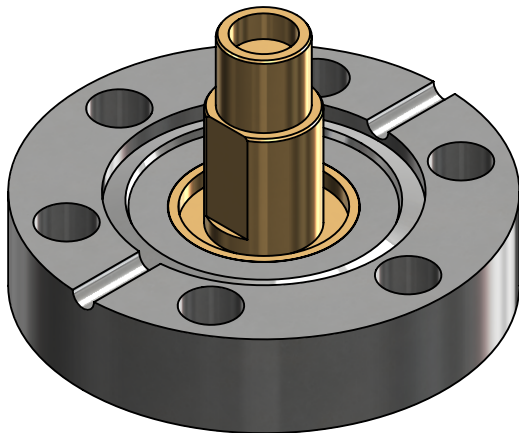
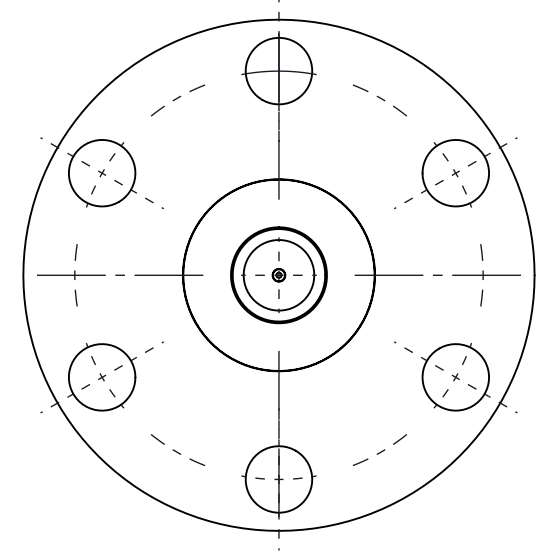
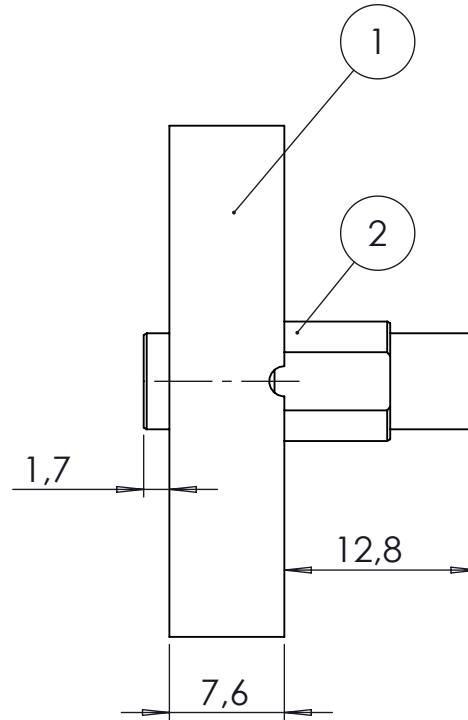
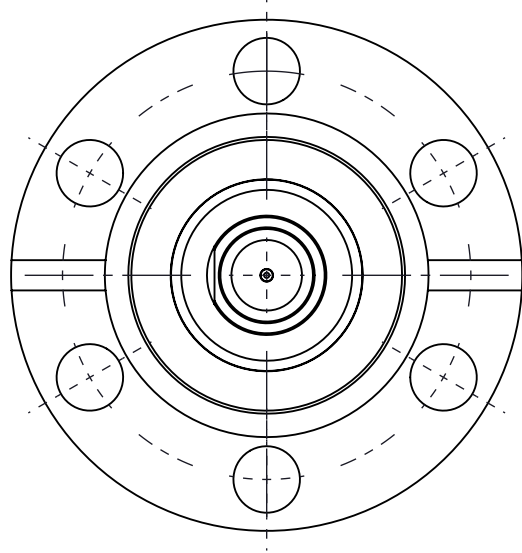


POS.	DESCRIPTION	MATERIAL	QTY
1	modified flange DN16 CF	1.4404 (316L)	1
2	SMA high frequency 18GHz, 50 Ohm	SS-Gold Plated	1



All informations provided in this drawing is considered to be confidential, proprietary and secret information. It is intended only for the use of individual or entity to whom it is sent. Individual or entity agrees to not disseminate or copy this information to anyone other than originally specified without the written consent Allectra GmbH.	Verwendetes Material (USED MATERIAL)		Bemerkung (REMARKS)	Kanten (EDGES)	PROJECTION
	Toleranz (TOLERANCE)		Maßstab (SCALE): 2:1	Gewicht (WIGHT):	46.40g
Oberfläche (SURFACE) Cleaned UHV- Compatible	Rauheit (ROUGHNESS) √		Werkstoff (MATERIAL):	Bl. (page)	page pages
origin name		DATE	NAME	A4	1 1
origin		Design	30.05.2023	AD	Benennung (DESCRIPTION): 1 off SMAD18G on flange DN16 CF
(drw/sketch/part no)		Drawn	30.05.2023	AD	
date of origin	INDEX	Check	01.06.2023	AD	
First revision		Approv	01.06.2023	AD	
			Zeich. Nr. (Drw. No.): 242-SMAD18G-C16		INDEX
INDEX Beschreibung (CHANGING)	LAST SAVE DAT.: 01.06.2023		part. no. 242-SMAD18G-C16		