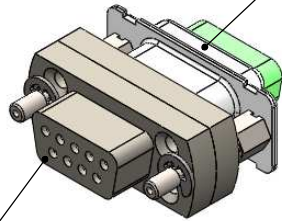
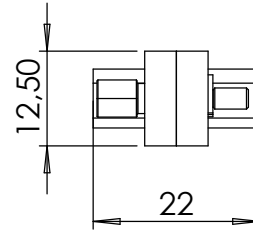


### Gender Adapter in combination with 211-MS09-HV

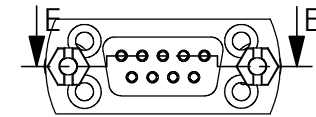
HV Connector 9 Pin



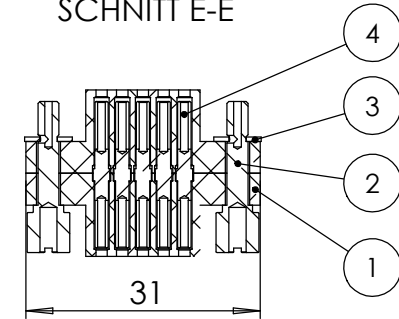
Show the front to contact SUB-D f/t



POS-NR.	DESCRIPTION	Material	QTY
1	Front Plate for SUB-D 9 Pin	PEEK	2
2	SUB-D Screw 4-40 UNC	1.4841 (X15CrNiSi25-21)	2
3	Lock washer D=2,3	Stainless Steel	2
4	Female SUB-D Contact	2.1247 (CuBe2) gold plated	9

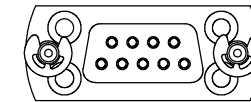
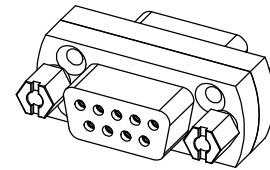


SCHNITT E-E

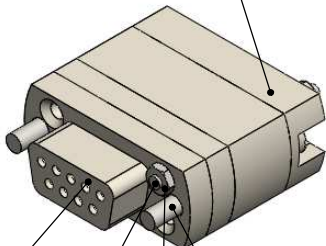


### Gender Adapter in combination with 211-MS09-PK or 211-MS09-UHV

POS-NR.	DESCRIPTION	Material	QTY
5	Countersunk Screw M2X10	Stainless Steel	2
6	Hexagon Nut M2 DIN934	Stainless Steel	2
7	Screw 4-40 UNC	Stainless Steel	2



### UHV / PEEK Connector 9 pin



Show the front to contact SUB-D f/t



Bemerkungen (Remarks)				Freimaßtoleranz (Standard Toleranz)	Maßstab (Scale)	Rauheit (Roughness)	europ.Projektion	
All informations provided in this drawing is considered to be confidential, proprietary and secret information. It is intended only for the use of individual or entity to whom it is sent. Individual or entity agrees to not disseminate or copy this information to anyone other than originally specified without the written consent Allelectra GmbH.					1:1			
				Datum	Name	Material, Standard Oberfläche (Treatment)	Kanten (edges)	
				Design	06.03.2014	JB		
				Drawn	08.07.2014	JB	Gewicht (weight)	
				Check			23.58	
				<b>Bezeichnung (Title)</b> Gender Adapter 09 pin UHV Version			Page:	Pages:
							1	5
				<b>Zeichnungsnummer (Drawing No.)</b> 211-D09-GA-PK			Revision	
							Format <b>A4</b>	
Index	Modification	Datum	Name	Datei (File) C:\PDMStore\C\PDMStore\				