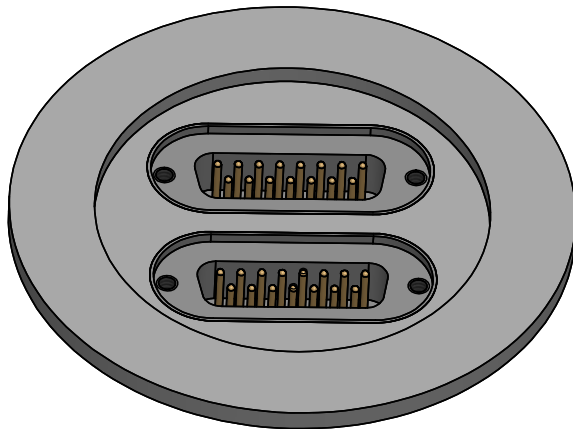
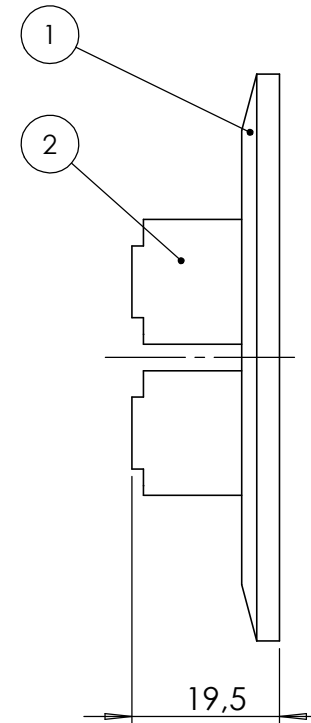
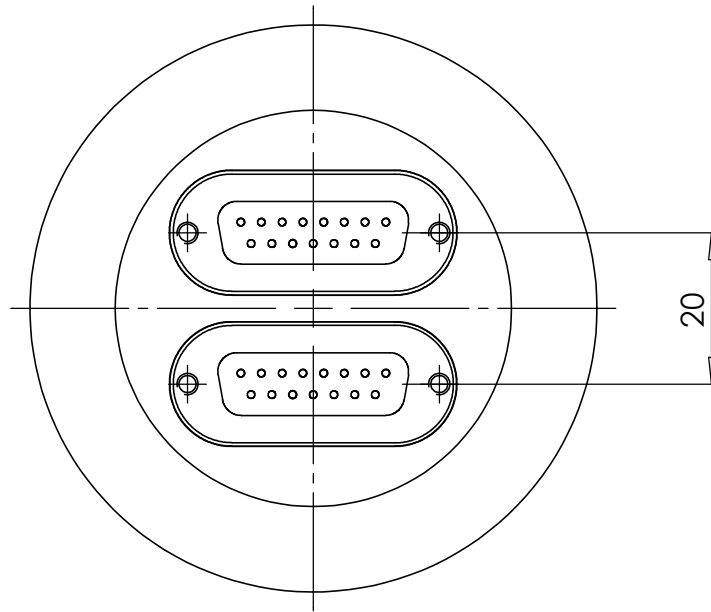


POS-NR.	DESCRIPTION	MATERIAL	QTY
1	modified flange DN50 KF	1.4301 (304)	1
2	15 pin SUB-D f/t	Stainless Steel	2



Bemerkungen (Remarks) HSG=47				Freimaßtoleranz (Standard Toleranz)		Maßstab (Scale)	Rauheit (Roughness)	europ.Projektion		
All informations provided in this drawing is considered to be confidential, proprietary and secret information. If is intended only for the use of individual or entity to whom it is sent. Individual or entity agrees to not disseminate or copy this information to anyone other than originally specified without the written consent Allectra GmbH.				Datum		1:1	Material, Standard Oberfläche (Treatment)	Kanten (edges)		
				Design	21.02.2018			JB	Bezeichnung (Title)	
				Drawn	17.07.2018	FW	2 of 15 pin SUB-D f/t on flange KF50		191.55	
				Check			Page: 1		Pages: 1	
						Zeichnungsnummer (Drawing No.) 210-D15-K50-2			Revision	
Index	Modification	Datum	Name			Datei (File) C:\PDMStore\C:\PDMStore\			Format A4	